



MSSBU OSCE PRACTICE

CASE 3_01_01

Station Vignette

You are a third-year student on ED rotation.

The GP has asked you to take a brief history from Jackson Southport, an 80-year-old man who has come into the emergency department with severe chest pain.

Vital signs:

- **Temperature:** 36.7 degrees Celsius.
- **Blood pressure:** 160/110 mmHg.
- **Heart rate:** 83/minute.
- **Respirations:** 14/minute.
- **BMI:** 37 kg/m².

TASK

You have a total of **7 minutes** to complete a physical examination.

At the end of the allotted time, you will have **1 minute** to answer the examiner's questions.

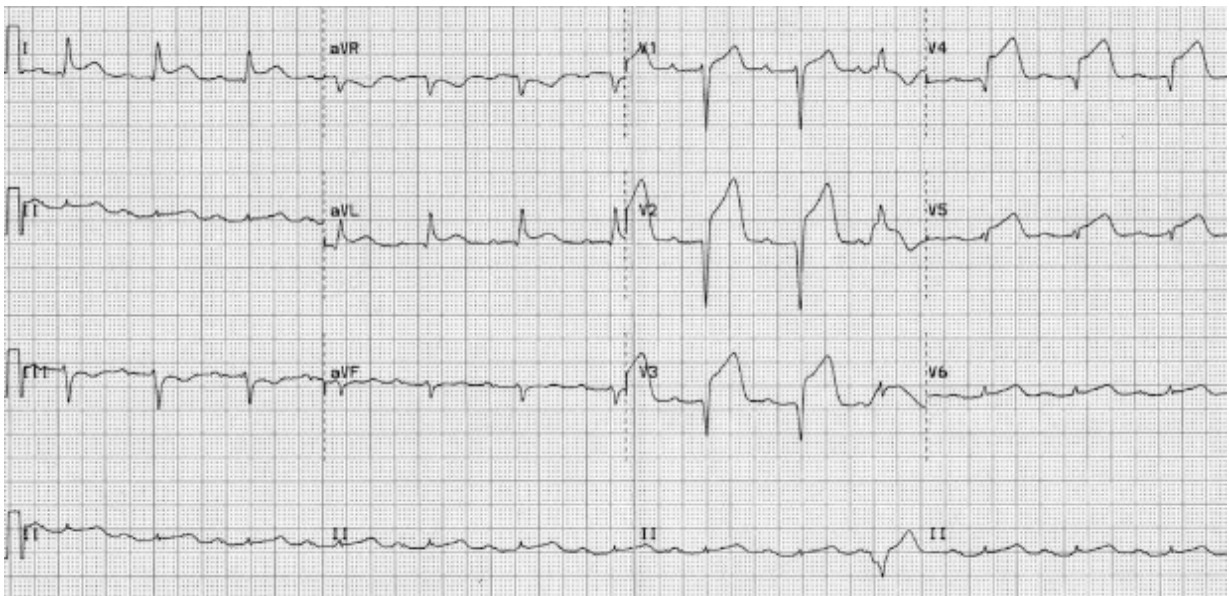
You do **NOT** need to complete a history.

EXAMINER QUESTIONS

1. What are the top **three (3)** investigations that you would order?
2. What is the initial **management** required for this patient?

See the ECG below:

3. What is the artery that has **most likely** been occluded in this case?



Case: Shane Higgins (acute chest pain)

Student Name:

	Not Satisfactory (0)	Borderline (0.5)	Satisfactory (1)
Washes hands on entry Comments on vitals General inspection: <ul style="list-style-type: none"> • Alert. • Pain. • Respiratory distress (dyspnoea, cough, wheeze, or tachypnoea). • BMI, posture, and body habitus. • Cyanosis and pallor. • Medical instruments. 			
Nails & Hands: <ul style="list-style-type: none"> • Capillary refill. • Pallor of the nailbeds/palmar creases. • Nicotine staining. • Xanthomata. • Clubbing. 			
Face: <ul style="list-style-type: none"> • Xanthelasma. • Conjunctival pallor. 			
Airway/neck: <ul style="list-style-type: none"> • Tracheal deviation. • Jugular venous pressure. 			
General inspection of chest with shirt off: <ul style="list-style-type: none"> • Chest wall abnormalities. • Trauma or scars to the chest. • Visible heartbeat. • Intercostal recession. • Pacemaker. 			
Anterior chest: <ul style="list-style-type: none"> • Palpate apex beat. • Palpate for heaves and thrills. • Auscultate all valvular areas. • Auscultate lungs. 			
Posterior chest: <ul style="list-style-type: none"> • Auscultate lung bases. 			
Abdomen: <ul style="list-style-type: none"> • Palpate all abdominal regions. • Check for peritonism (cough, percussion, or rebound tenderness). • Palpate aortic diameter. 			
Lower limbs: <ul style="list-style-type: none"> • Check peripheral pulses. • Calf tenderness. 			
Questions	Investigations a. ECG, troponin testing, chest x-ray.		

	Management a. Morphine, Oxygen, Nitrates, and Aspirin. ECG a. ? artery	
Global score:	Overall impression of candidate based on warmth, clarity and competence: 1 = fail 2 = borderline 3 = pass/expected 4 = good 5 = excellent	/5
Total score:	/39	
Comments:		